



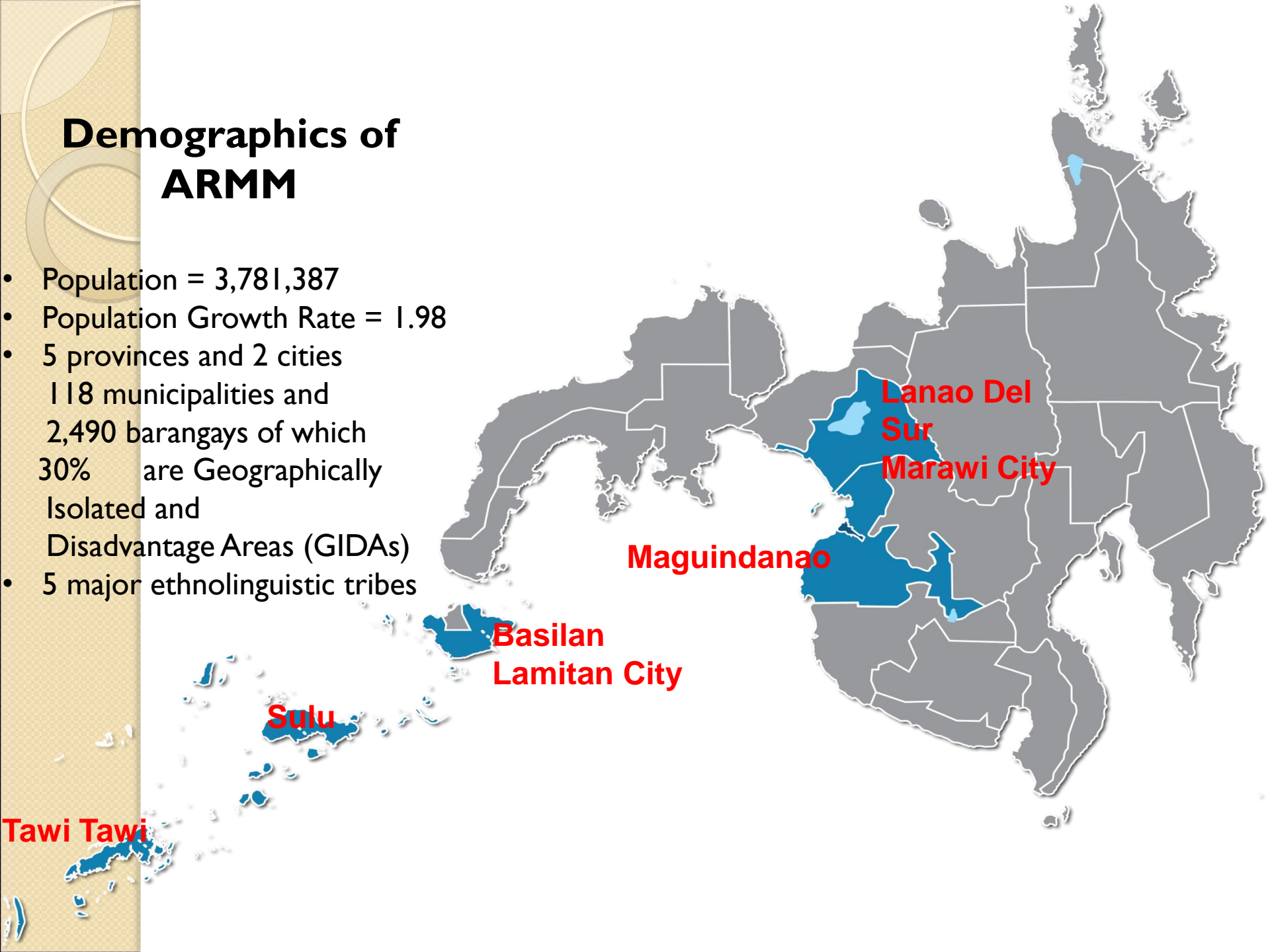
MIDWIVES

**Service Beyond Self,
Traversing Boundaries,
Crossing Limits,
Partners for Life**

DAYANG CARLSUM SANGKULA- JUMAIDE, RN, MAN, MPA
Assistant Secretary of Health-ARMM
Family Health Cluster Head

Demographics of ARMM

- Population = 3,781,387
- Population Growth Rate = 1.98
- 5 provinces and 2 cities
 - 118 municipalities and 2,490 barangays of which 30% are Geographically Isolated and Disadvantage Areas (GIDAs)
- 5 major ethnolinguistic tribes



OUR MIDWIVES

- **Midwives in Every Communities in ARMM**
(MECA 600 of DOH-ARMM)



- **LGU Midwives**
- **Private Midwives**
- **DOH Regular Midwives**

Serving in different places...



Who are our Midwives?



An ordinary day in ARMM



ULTIMATE CHALLENGE

Our peoples' lack of confidence and acceptance towards health workers and interventions





Unsung heroes of health...

The Protracted armed conflict increases the risk to population and health workers



ISIS

MILF



AFP



BIFF




MNLF

ABU SAYYAF



Barriers That Affects Health Services in Mindanao

- **Peace and security**
- **Poverty**
- **Negative perception towards modern health interventions**
- **Mistrust of people towards public servants**
- **Geographic spread and isolation**
- **Transportation and communication difficulty**
- **Physical limitation and inadequate service provision**



Beyond our duty,
beyond our reach,
beyond our grasp...

WE SERVE!

MODEL OF DELAYS

Delay 1:

Delay in deciding to seek medical care resulting to *Home Deaths*

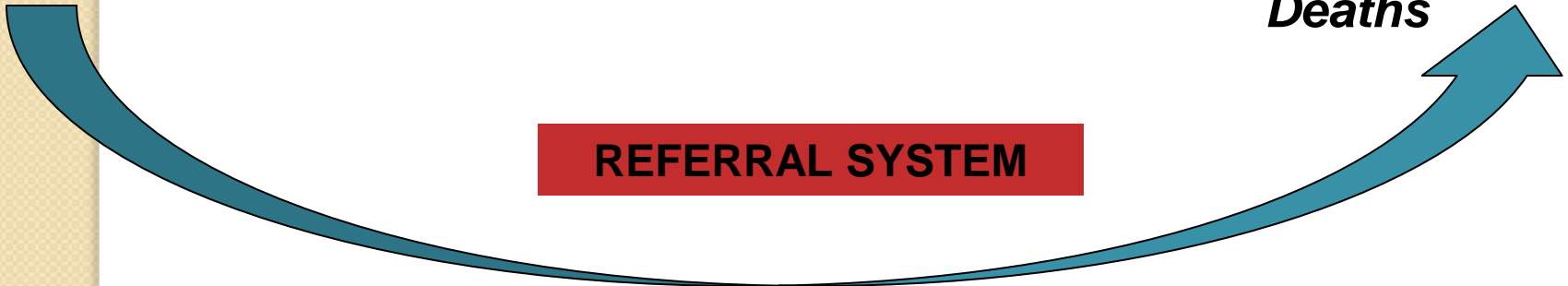
Delay 3:

Delay in receiving appropriate and adequate care in the facility resulting to *Health Facility Deaths*

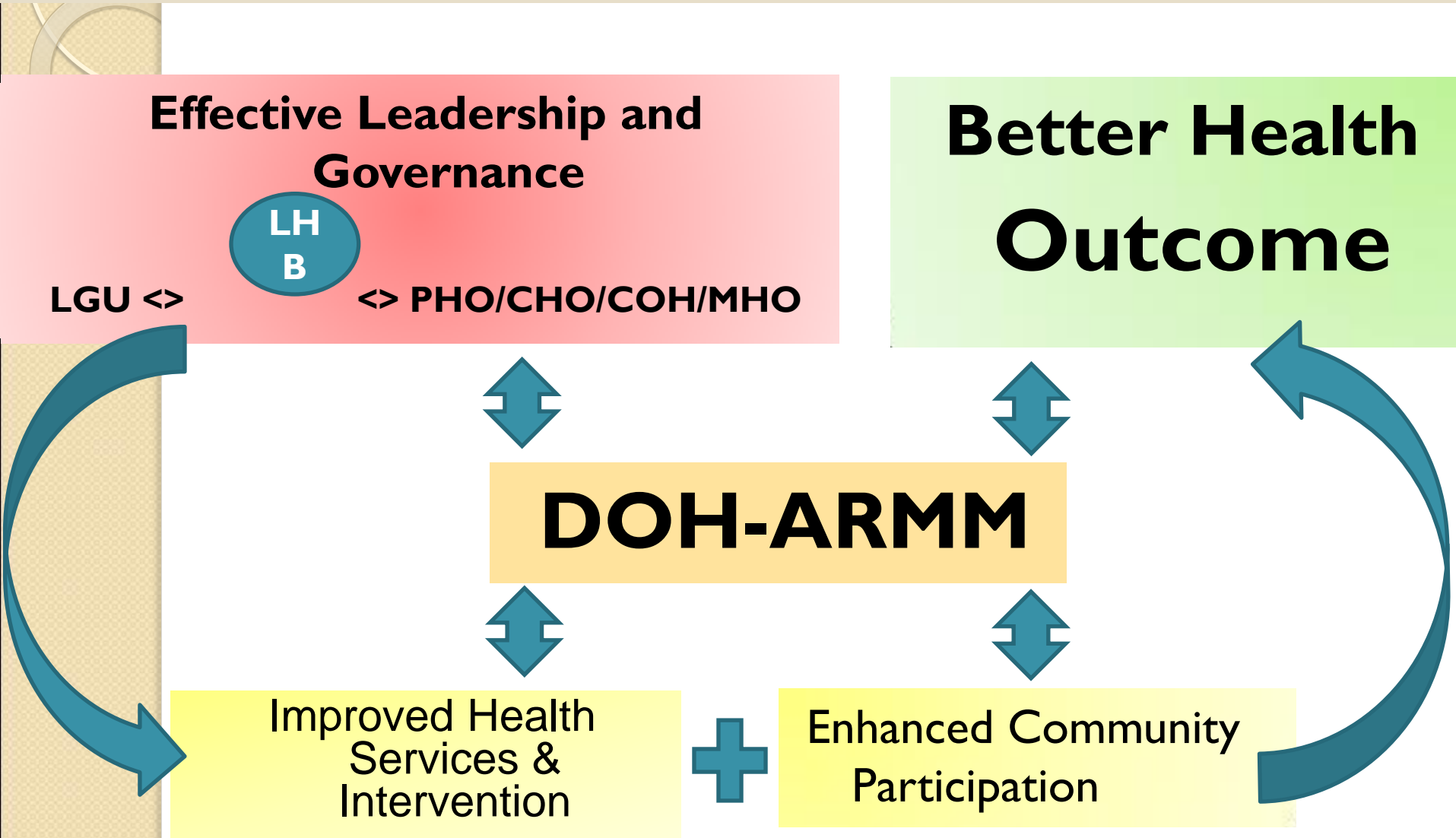
REFERRAL SYSTEM

Delay 2:

Delay in identifying and reaching appropriate health facility resulting to *Transit Deaths*



ARMM Model For Effective Health Management



PEOPLE

IMPROVED HEALTH STATUS

ACHIEVE DEVELOPMENT GOALS

BETTER HEALTH SERVICES & INTERVENTIONS

FINANCIAL PROTECTION AMONG THE POOR

LGU (Prov/Mun)

LH
B

PHO, CHO, MHO

Info System

Financing

Governance

Regulation

HR

Service Delivery

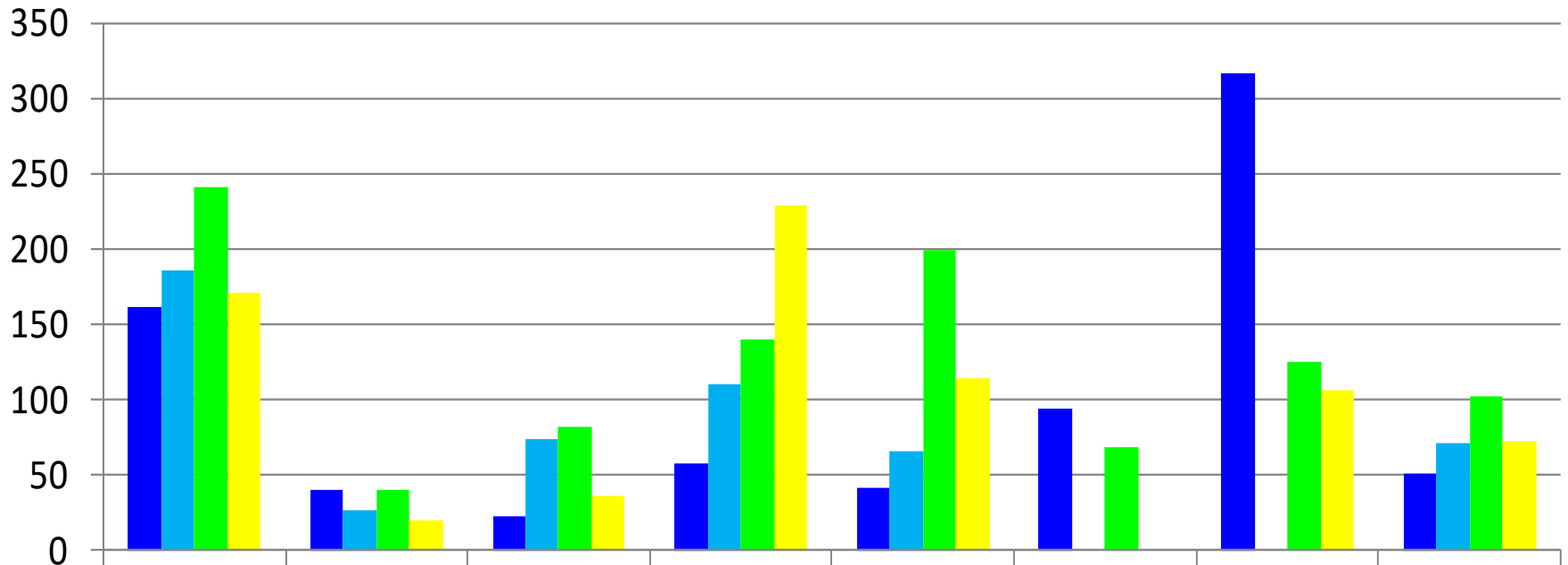
DOH-ARMM



People... our best investment in life.

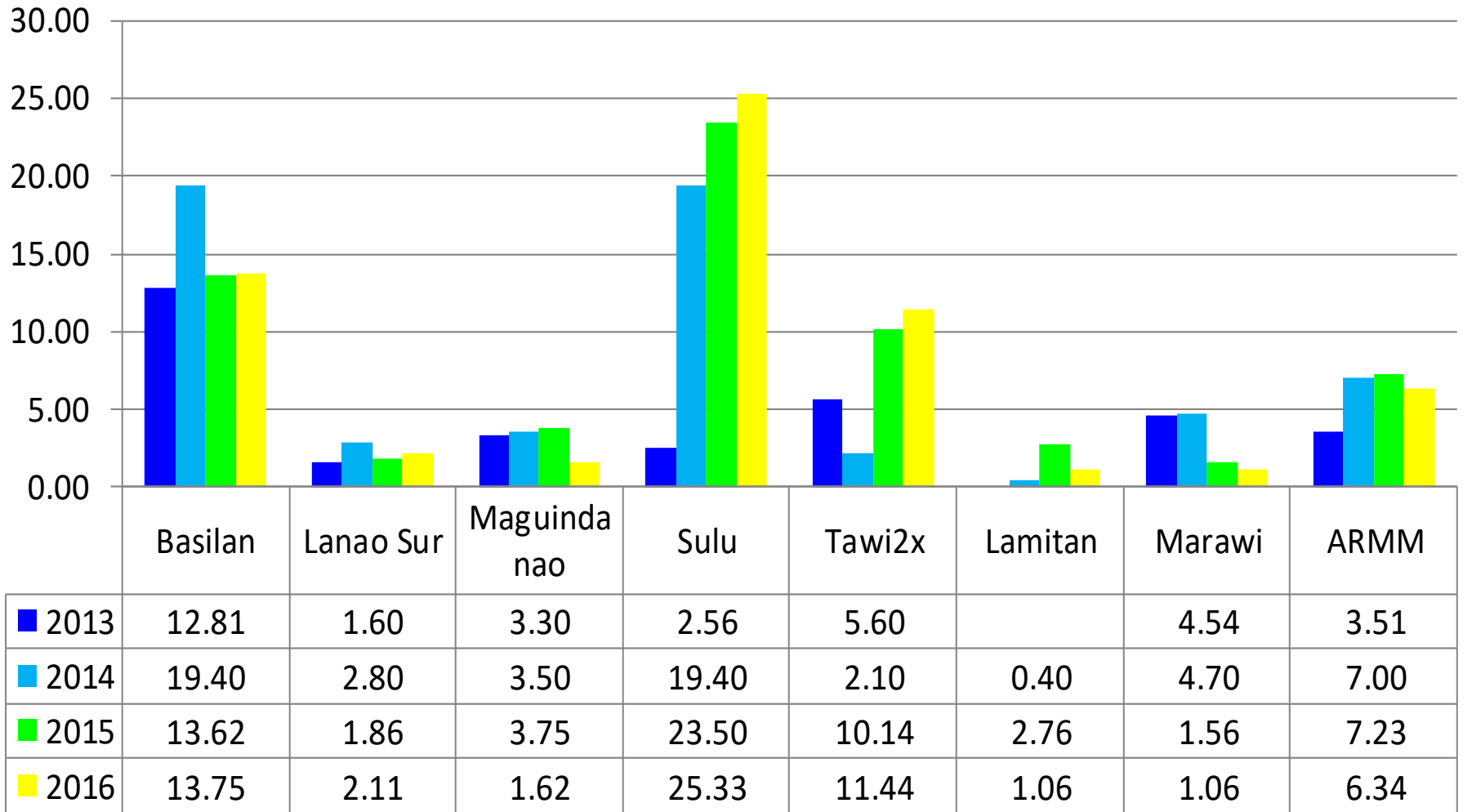
Deserves respect and be respected.

Maternal Mortality Rate (MMR) Comparative 2013 – 2016

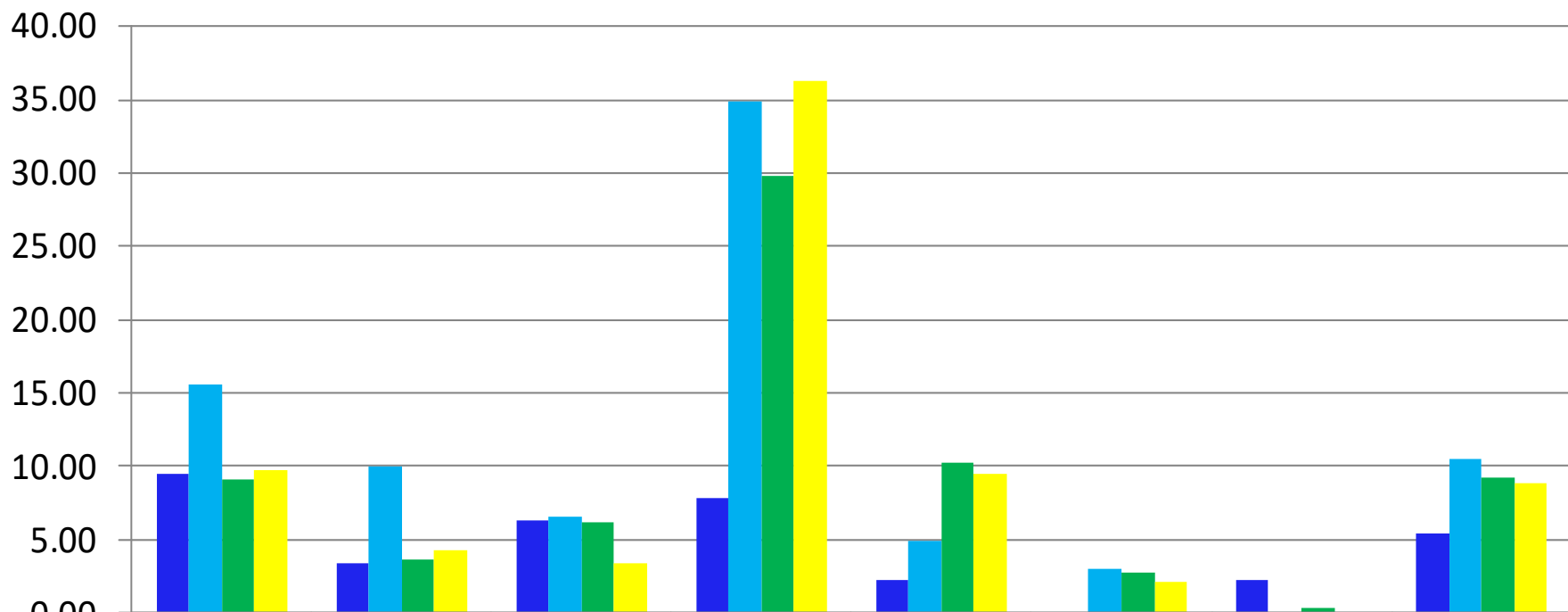


	Basilan	Lanao Sur	Maguindanao	Sulu	Tawi2x	Lamitan	Marawi	ARMM
■ 2013	162	40	22	57	41	94	317	51
■ 2014	186	27	74	110	66	0	0	71
■ 2015	242	40	82	140	200	69	125	102
■ 2016	171	20	36	229	114	0	106	72

Infant Mortality Rate (IMR) Comparative 2013 – 2016

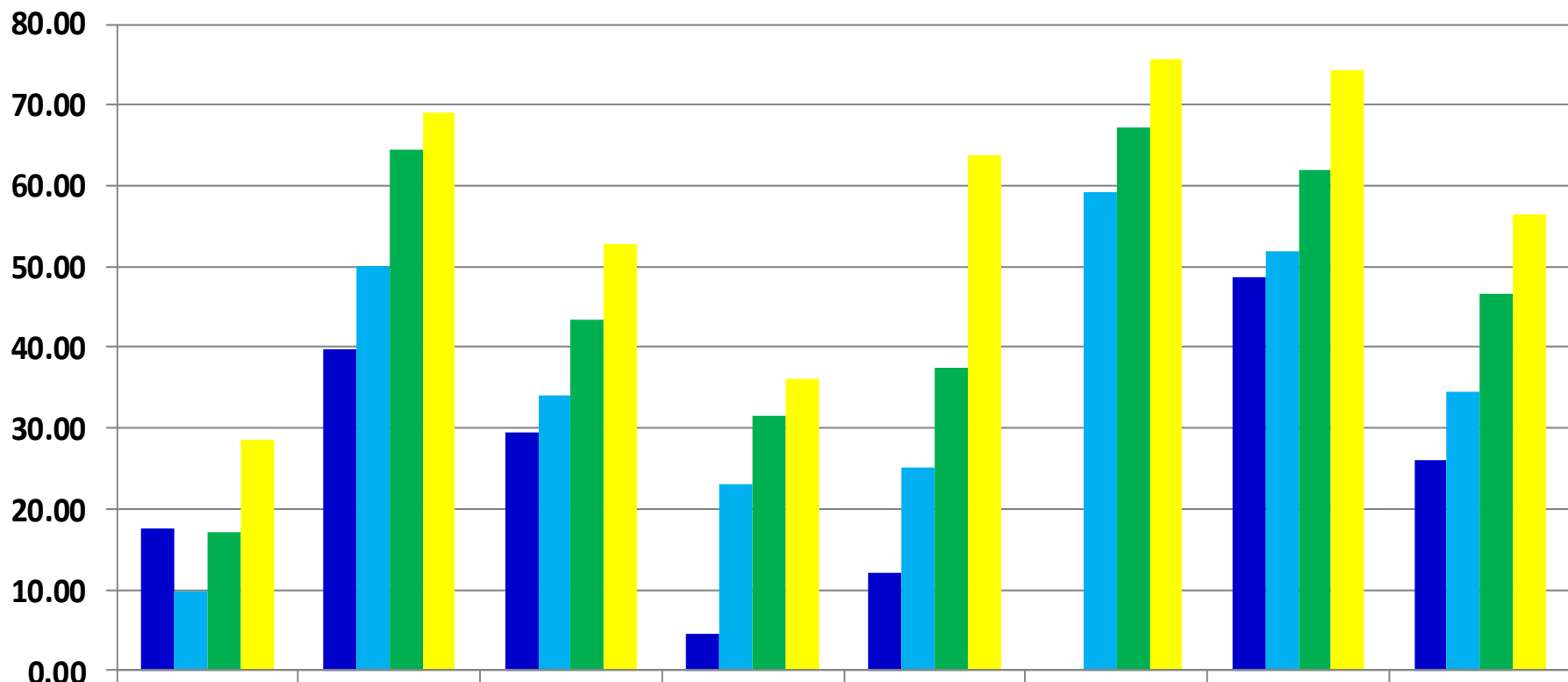


Under Five Children Mortality Rate (UFCMR) Comparative 2013-2016



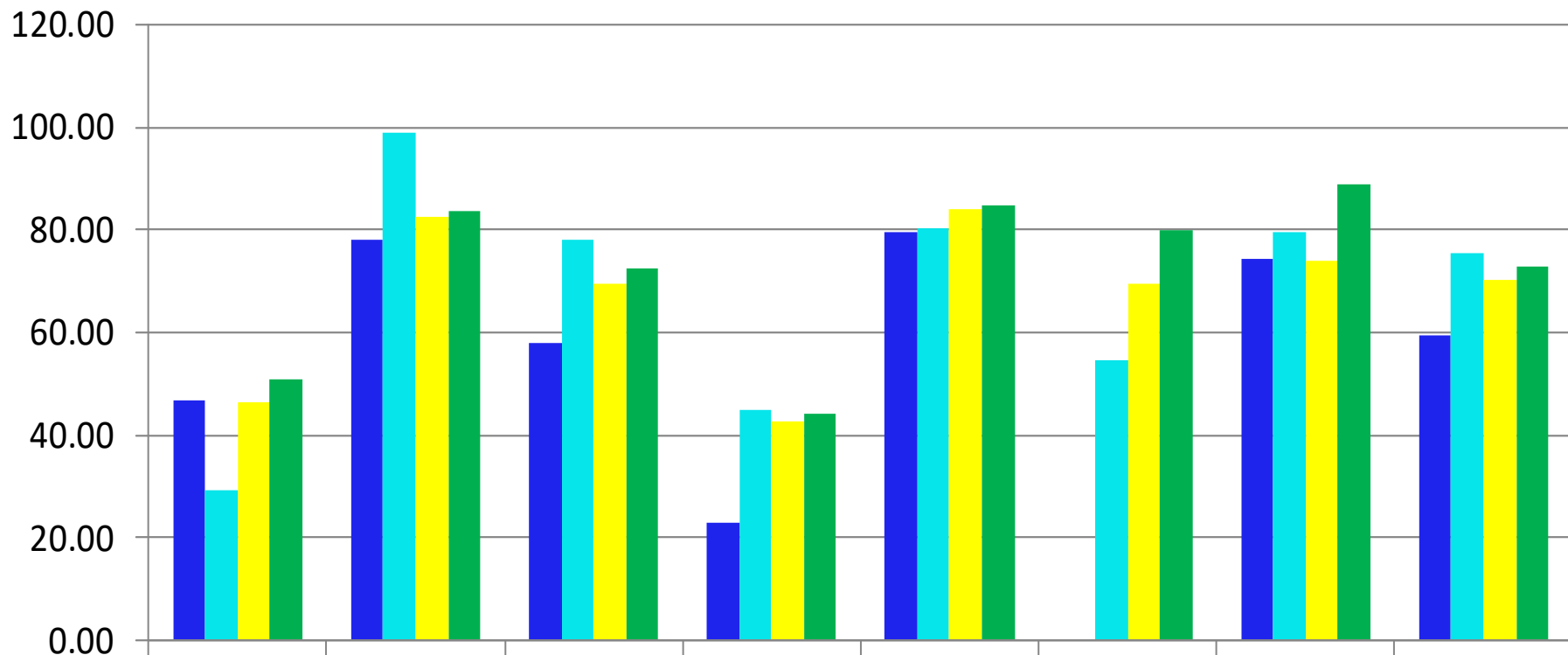
	Basilan	Lanao Sur	Maguindanao	Sulu	Tawi2x	Lamitan	Marawi	ARMM
2013	9.45	3.34	6.34	7.83	2.19		2.27	5.43
2014	15.52	9.92	6.60	34.82	4.91	3.04	0.00	10.43
2015	9.08	3.57	6.13	29.77	10.25	2.76	0.31	9.20
2016	9.74	4.22	3.41	36.28	9.48	2.12	0.00	8.78

Facility Based Delivery



	Basilan	Lanao Sur	Maguindanao	Sulu	Tawi2x	Lamitan	Marawi	ARMM
■ 2013	17.66	39.70	29.44	4.61	12.18		48.71	25.98
■ 2014	9.74	50.08	33.96	23.17	25.11	59.23	51.92	34.59
■ 2015	17.20	64.45	43.42	31.57	37.54	67.23	61.93	46.65
■ 2016	28.56	69.02	52.91	36.07	63.71	75.63	74.39	56.45

Deliveries Attended by SBA



	Basilan	Lanao Sur	Maguindanao	Sulu	Tawi2x	Lamitan	Marawi	ARMM
■ 2013	46.75	78.26	58.01	23.00	79.42		74.42	59.31
■ 2014	29.28	98.97	78.01	44.87	80.25	54.55	79.61	75.50
■ 2015	46.28	82.67	69.47	42.83	84.03	69.52	73.92	70.10
■ 2016	50.72	83.74	72.51	43.98	84.92	80.11	88.82	72.90

My challenge to all of you...

- **Do the right thing**
- **Persevere and protect others**
- **Above all, be available as a symbol of hope for the sake of others**

ARMM as champion of MRSIA 2014

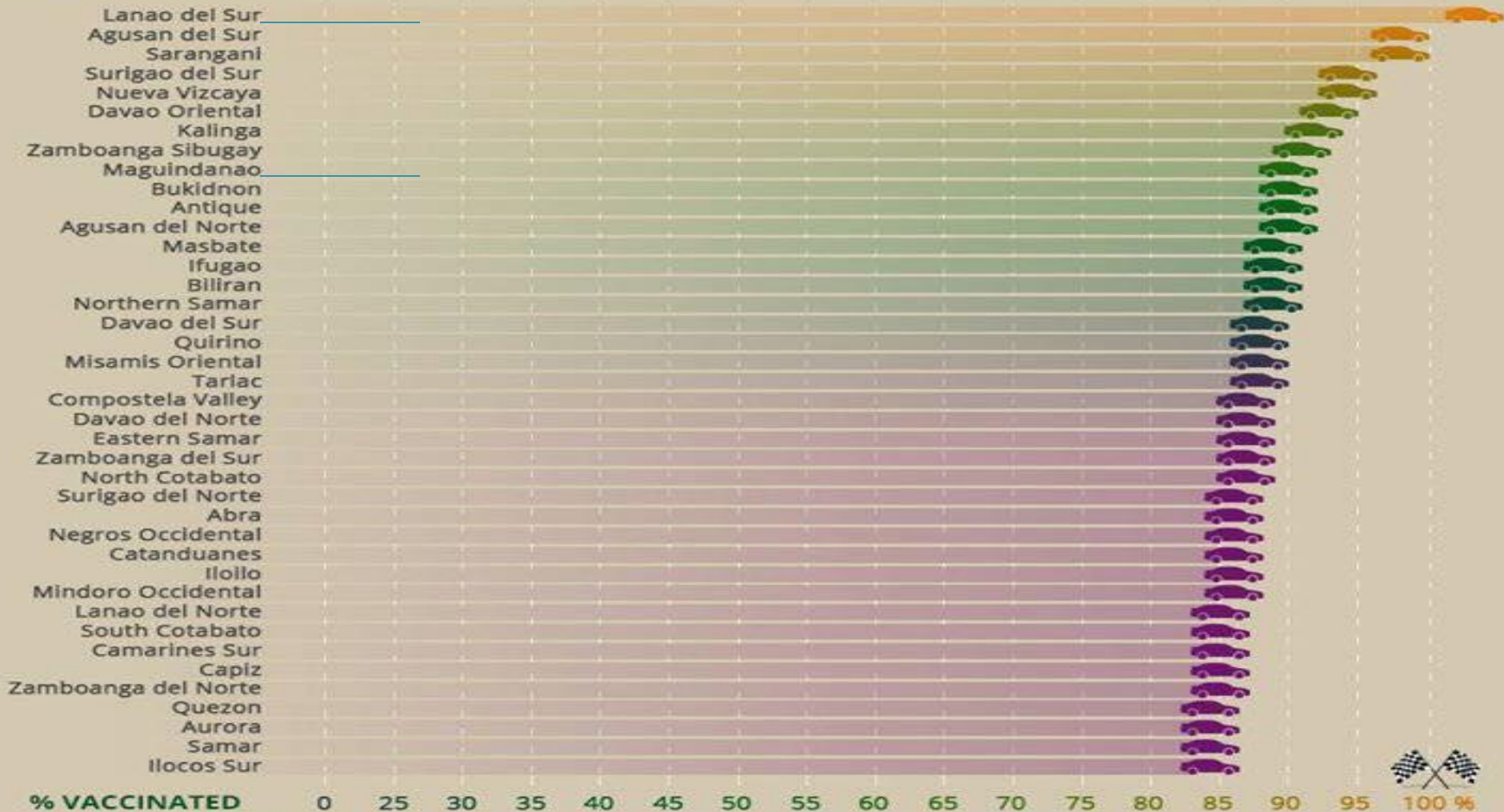


LIGTAS SA TIGDAS 2014

% MEASLES RUBELLA VACCINATED PROVINCIAL CONSOLIDATED REPORT

As of: October 1, 2014

part 1 of 2



2016 DOH-ARMM cited as **The Most Improved Region** by DOH Central

1st Round of National School Deworming Month (NSDM July)

Pre-Sac Deworming (1-4 years old)



Number	Name of Provinces/ Chartered Cities	Total Population 1-4 (12-59 months) y/o (10.23%)	Total no. of 1-4 y/o given ALB	% Acc.
1	BASILAN	32,108	29,106	90.65%
2	SULU	80,300	65,718	81.84%
3	TAWI-TAWI	41,427	39,414	95.14%
4	LANAO DEL-SUR	104,455	95,179	91.11%
5	MAGUINDANAO	120,093	113,280	94.33%
	TOTAL	378,383	342,697	90.56%

Midwives in action...



Reaching the unreachable...





F

Serving the unserved...



WELCOME
TO
TACLOBAN CITY



ARMM, in the eyes of others...

- In the past that a person in ARMM may die without being seen by a doctor in his lifetime.
- Barriers are endless, shortening the lifespan of a individual by ten years compared to manila and other developed cities.
- The issue on availability, accessibility, and affordability of health services remained elusive and hard to come by in some areas. MECA, gained the monicker, "little doctors to the villages."
- To date, not only midwives but nurses (NDP) and doctors (DTTB) followed suit, reaching the unreached, serving the unserved.

We would like to serve better...

Makiisa...

Makialam...

Makipagtulungan!

Telefax: (064)4216842



narivito

naglilingkod


nagmamahal

REPUBLIC OF THE PHILIPPINES
DEPARTMENT OF HEALTH
**DOH
ARMM**

Para sa karagdagang impormasyon, tumawag sa ####, o mag-e-mail sa info@doh-armm.gov.ph.



DOH-ARMM



**SALAMAT PO
THANK YOU
SHUKRAN**